

A close-up photograph of a woman's back and shoulder, showing smooth skin and a well-defined shoulder blade. Her hand is resting on her shoulder, with manicured nails. The background is a soft, warm gradient.

Elite⁺_{TM}

NEW high power
and speed

Elite⁺_{TM}
Aesthetic Workstation

The best of both worlds... now even faster

Elite⁺ provides the advantage of dual wavelength capability in one system – 755nm Alexandrite and 1064 Nd:YAG – for all patient skin types.

Elite⁺ is a highly versatile, dual-wavelength system delivering fast results for a range of skin treatments:

- Hair removal
- Facial and leg veins
- Wrinkle reduction
- Epidermal pigmented lesions
 - Age spots
 - Sun damage

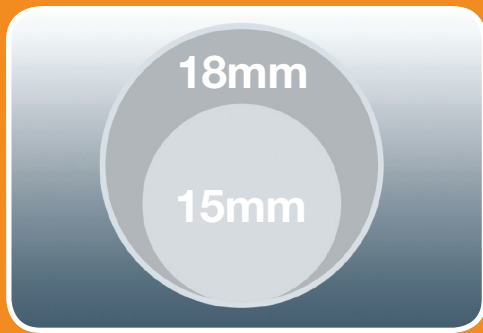
Expand your revenue opportunity with this highly effective, multipurpose aesthetic workstation.

- Choose the optimal wavelength to maximise efficacy and patient comfort for any procedure – whether it be hair removal, vascular and benign pigmented lesion treatment, or wrinkle reduction. You can even switch between wavelengths during a single procedure.
- Perform multiple treatments on the same patient during the same visit, resulting in a more productive practice.



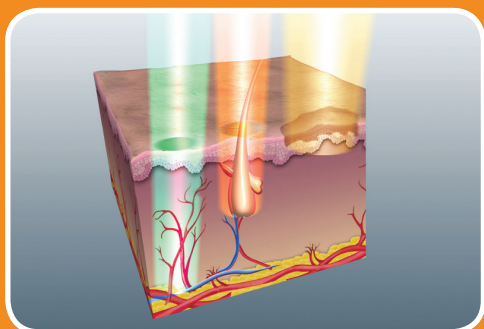
One laser, all skin types

- Classic 755nm wavelength with power and speed options that provide up to 20J/cm² at 18mm spot size and 2Hz; high melanin absorption for dependable, repeatable and permanent hair reduction, as well as treatments of benign pigmented lesions.
- High-powered 1064nm is the ideal wavelength for hair removal on darker skin types and tanned skin. It is the wavelength of choice for facial and leg veins as well as reduction of redness, pigmentation and wrinkles.



Quick, customisable treatment

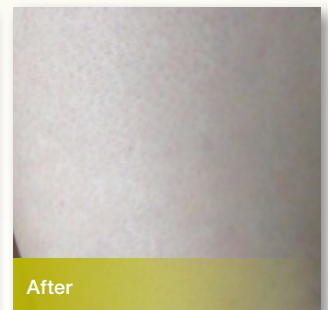
- Elite+ delivers high fluence with large spot sizes for deeper penetration, faster procedures and optimal results.
- Up to 7 different spot sizes with adjustable pulse widths provide treatments tailored to your patient's specific needs.
- Light weight, ergonomic handpieces with optional air cooling system adaptor to increase patient comfort.



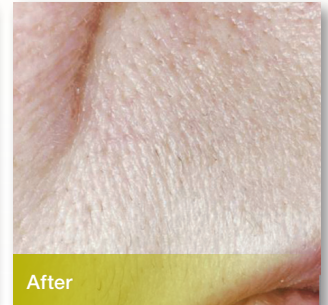
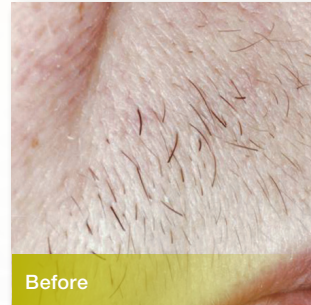
Results using the Elite+



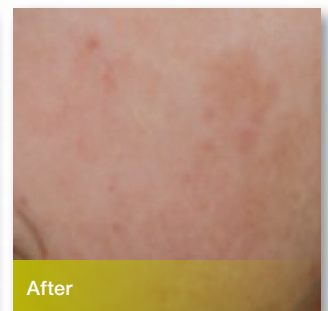
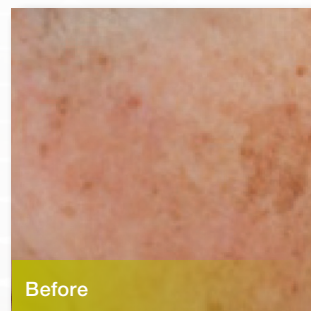
Photos courtesy of B. Jackson, MD



Photos courtesy of C. Arroyo, MD



Photos courtesy of D. McDaniel, MD



Photos courtesy of E. Lach, MD

Elite⁺ specifications

System type	Alexandrite	Nd:YAG
Wavelength	755nm	1064nm
Pulse width	Adjustable 0.5 – 300 msec	Adjustable 0.4 – 300 msec
Maximum fluence per spot size*		
18mm	20J/cm ²	24J/cm ²
15mm	30J/cm ²	35J/cm ²
12mm	45J/cm ²	50J/cm ²
10mm	50J/cm ²	80J/cm ²
7mm	60J/cm ²	160J/cm ²
5mm	50J/cm ²	240J/cm ²
3mm	–	300J/cm ²
Maximum rep rate†	3Hz	5Hz
Aiming beam	Red	
Skin cooling system	Cold air - available separately	
Electrical requirements	208/240 VAC/30A	
Size (H x W x D)	41" x 15" x 25" (104cm x 38cm 64cm)	
Weight	180lbs (82kg)	

*Independent of pulse width † Adjustable continuous pulse or single pulse operation

Air cooling system available

Cynosure's SmartCool™ air cooling system for Elite⁺ further enhances patient comfort and decreases the likelihood of adverse side effects. Available separately.

Contact Cynosure today for more information about the Elite⁺ and maximise your business potential in the aesthetic laser market.

Cynosure Pty Ltd, Ground Floor, 14-16 Suakin St, Pymble, NSW 2073

P +61 2 9484 4546 **1300 CYNOSURE**

E infoaustralia@cynosure.com

© 2014 Cynosure, Inc. Cynosure and the Cynosure logo are proprietary trademarks of Cynosure, Inc. Elite is a trademark of Cynosure, Inc.

CYNOSURE®

Palomar
ConBio

cynosureaustralia.com